



MONTHLY MEMBERSHIP PROGRESS REPORT

Results as of: 6/30/2015

Multiple District 323

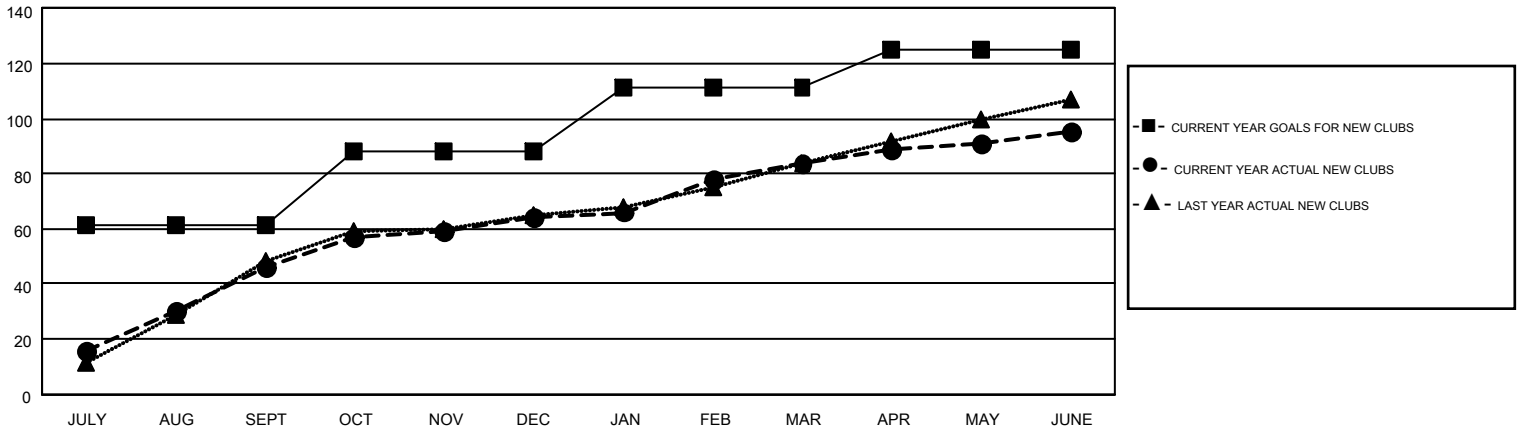
LOCATION: INDIA

GMT: KAMLESH JAIN

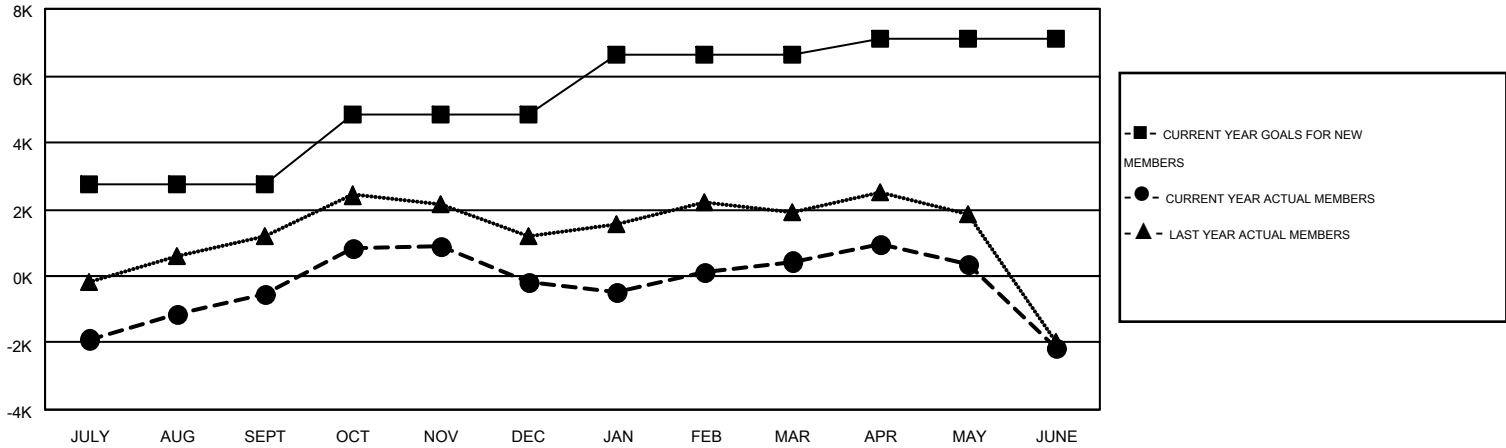
GMT CA 6

Clubs					Members				
RESULTS FOR 2014-2015					RESULTS FOR 2014-2015				
QUARTER	NEW CLUB GOAL	NEW CLUBS	DROPPED CLUBS	NET GAIN/LOSS	QUARTER	NEW MEMBER GOAL	CHARTER AND NEW MEMBERS ADDED	DROPPED MEMBERS	NET GAIN/LOSS
JULY/AUG/SEPT	61	46	6	40	JULY/AUG/SEPT	2,767	3,445	3,960	-515
OCT/NOV/DEC	27	18	39	-21	OCT/NOV/DEC	2,061	2,349	1,994	355
JAN/FEB/MAR	23	20	13	7	JAN/FEB/MAR	1,791	1,731	1,125	606
APR/MAY/JUNE	14	11	75	-64	APR/MAY/JUNE	460	2,372	4,947	-2,575

GOALS AND ACTUAL NEW CLUBS CUMULATIVE



GOALS AND ACTUAL MEMBERS CUMULATIVE



DROPPED CLUBS: 133	1067 CLUBS OF 1488 ADDED 1 OR MORE NEW MEMBERS	GENDER DISTRIBUTION
		MALE 39,154 (73.09%)
		FEMALE 14,412 (26.91%)
DROPPED MEMBERS	CLICK HERE FOR HEALTH ASSESSMENT DATA	FAMILY UNIT MEMBERS 22,277
DECEASED 174		HEAD OF HOUSEHOLD 9,693
CLUB CANCELLED 2,407		NON-HEAD OF HOUSEHOLD 12,584
OTHER 9,445		
TOTAL 12,026		